

СЕВЕРО-ЗАПАДНАЯ СВЕТОТЕХНИЧЕСКАЯ ЛАБОРАТОРИЯ

Эффективность света:

89 Lumen/Watt

Качество света:

CRI: 91,5

Цветовая температура:

4426 K

Поток: 3890 lm

Интенс.: 378 cd

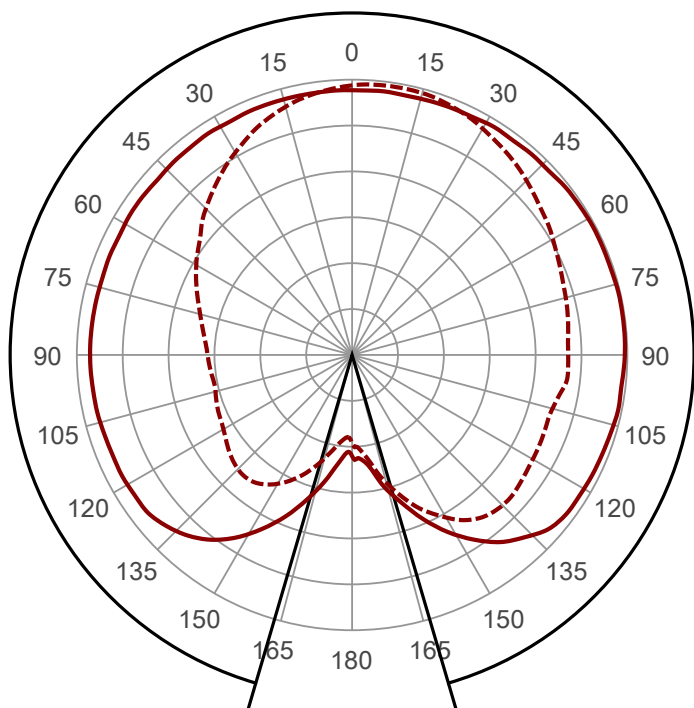
Мощн.: 43,6 W

КПД: 0,98



Угол пучка

327,3° (4 PLANES)
8 C-Planes

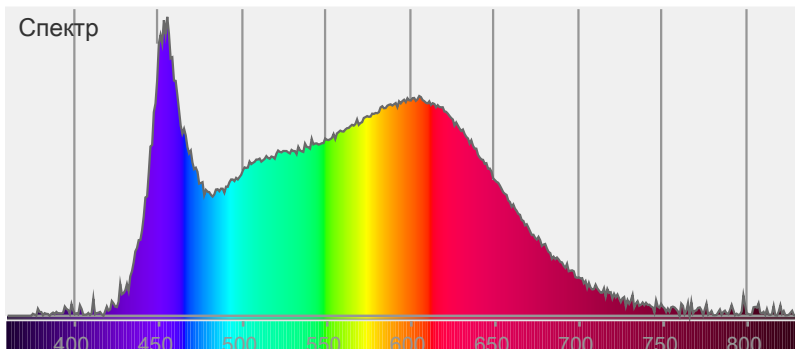


Цвет



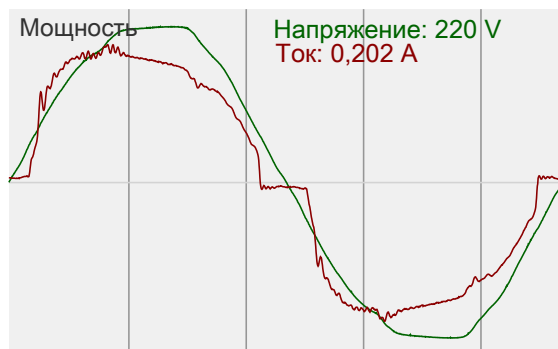
CIE1931
x: 0,363
y: 0,360

Спектр

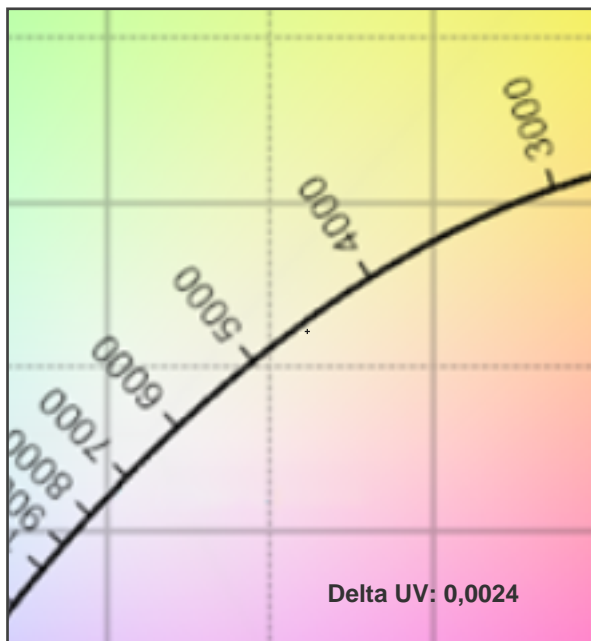
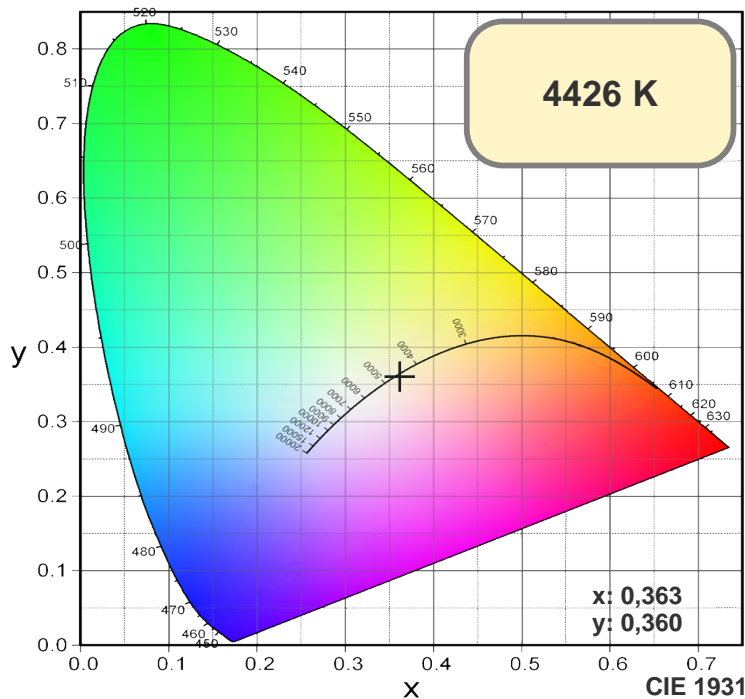


Мощность

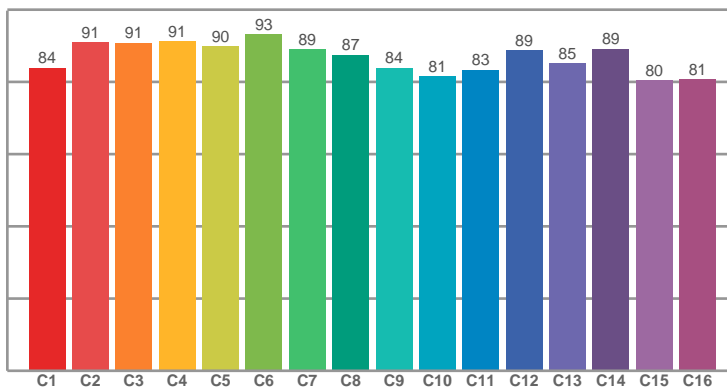
Напряжение: 220 V
Ток: 0,202 A



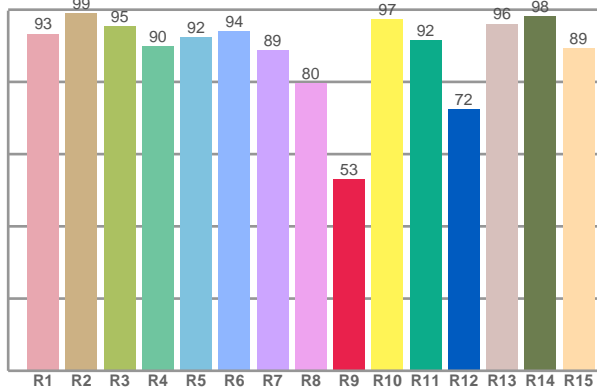
СЕВЕРО-ЗАПАДНАЯ СВЕТОТЕХНИЧЕСКАЯ ЛАБОРАТОРИЯ



TM30: 86,8



CRI: 91,5 (R1-R8)



CRI R values, only R1-R8 are used to calculate final CRI value

R1	R2	R3	R4	R5	R6	R7	R8	R9	R10	R11	R12	R13	R14	R15
93,27	99,01	95,42	89,77	92,29	94,06	88,79	79,54	52,97	97,21	91,58	72,40	96,04	98,21	89,26

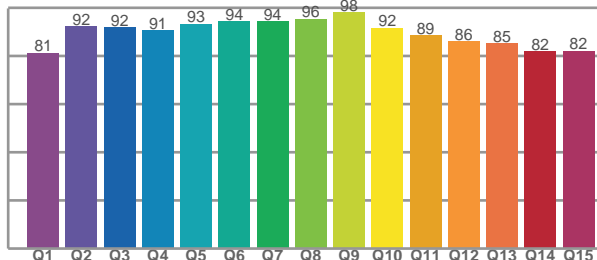
TM30 C values, 16 binned values out of total of 99 C values

C1	C2	C3	C4	C5	C6	C7	C8	C9	C10	C11	C12	C13	C14	C15	C16
83,88	90,91	90,80	91,18	89,89	93,15	88,92	87,44	83,85	81,42	83,35	88,72	85,06	89,15	80,32	80,76

CQS Q values

Q1	Q2	Q3	Q4	Q5	Q6	Q7	Q8	Q9	Q10	Q11	Q12	Q13	Q14	Q15
81,38	92,23	92,12	90,59	93,46	94,39	94,44	95,51	98,16	91,74	88,72	86,08	85,28	82,03	82,22

CQS: 88,7



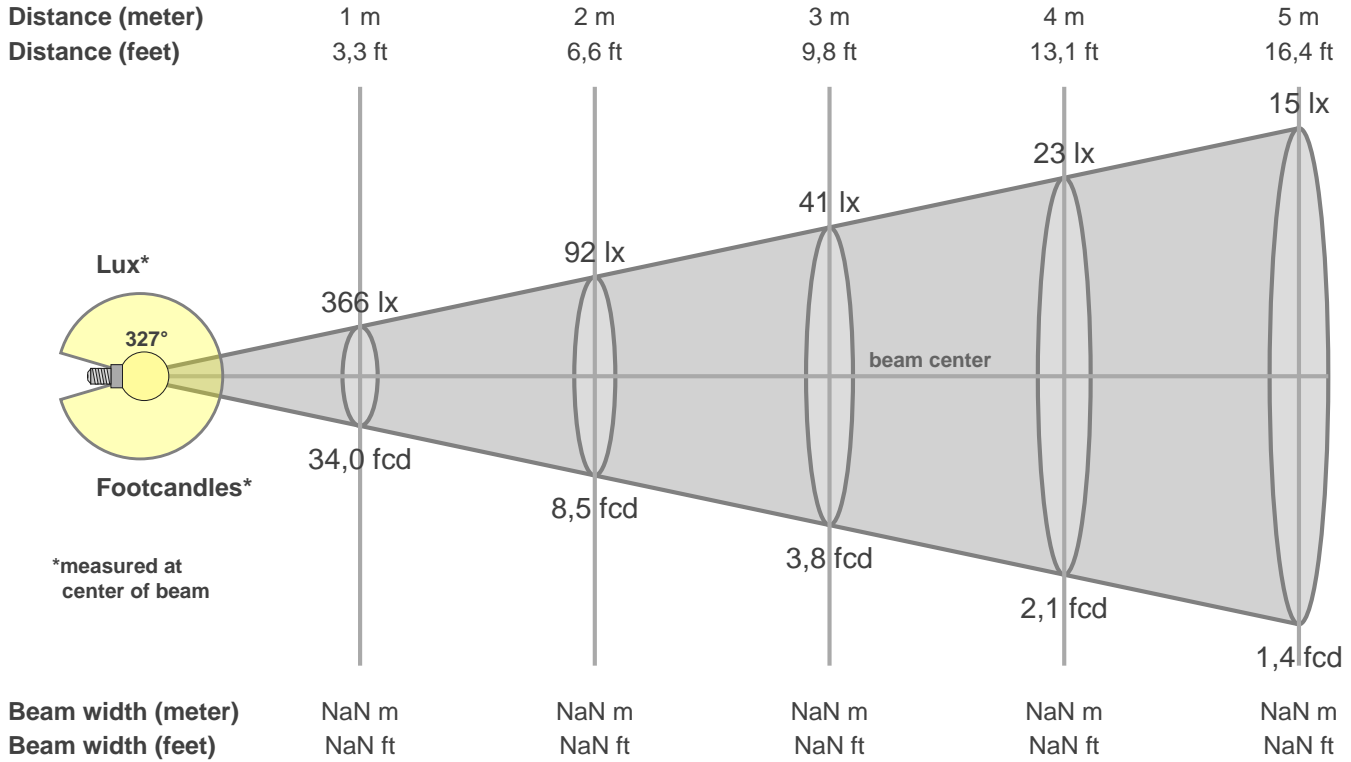
Color parameters

CCT	CRI	CRI R9	TM30 Rf	TM30 Rg	CQS	x	y	u	v	Duv
4426 K	91,5	53,0	86,8	95,8	88,7	0,4	0,4	0,2	0,3	0,0024

СЕВЕРО-ЗАПАДНАЯ СВЕТОТЕХНИЧЕСКАЯ ЛАБОРАТОРИЯ

Beam details

3 of 3



Intensities in 0° c-plane

0°	9°	18°	27°	36°	45°	54°	63°	72°	81°	90°	99°	108°	117°	126°	135°	144°	153°	162°	171°
366	366	366	365	365	363	363	362	362	362	362	362	360	359	357	344	315	269	214	161
100%	100%	100%	100%	100%	99%	99%	99%	99%	99%	99%	99%	98%	98%	98%	94%	86%	73%	58%	44%

Intensities in 90° c-plane

0°	9°	18°	27°	36°	45°	54°	63°	72°	81°	90°	99°	108°	117°	126°	135°	144°	153°	162°	171°
366	358	344	325	303	281	257	238	219	205	197	192	194	200	210	219	215	193	158	124
100%	98%	94%	89%	83%	77%	70%	65%	60%	56%	54%	53%	53%	54%	57%	60%	59%	53%	43%	34%

Intensities in 180° c-plane

0°	9°	18°	27°	36°	45°	54°	63°	72°	81°	90°	99°	108°	117°	126°	135°	144°	153°	162°	171°
366	367	368	369	371	373	376	377	377	378	377	375	373	371	369	352	319	270	213	158
100%	100%	100%	101%	101%	102%	103%	103%	103%	103%	103%	102%	102%	101%	101%	96%	87%	74%	58%	43%

Intensities in 270° c-plane

0°	9°	18°	27°	36°	45°	54°	63°	72°	81°	90°	99°	108°	117°	126°	135°	144°	153°	162°	171°
366	369	367	359	348	335	323	311	303	297	294	290	281	283	287	289	276	242	197	146
100%	101%	100%	98%	95%	92%	88%	85%	83%	81%	80%	79%	77%	77%	78%	79%	75%	66%	54%	40%

Beam angle 50%	Field angle 10%	Cutoff angle 2,5%	Intensity ratio in 120° cone	Intensity ratio in 90° cone
327,3°	360,0°	360,0°	27,8%	16,7%